



# AMEL 50

Year 2019

**AMEL**  
KronenbergYachting

---

Kronenberg Yachting GmbH  
Neubiberger Str. 57a | 81737 München

# AMEL 50



**Boat sold.**

## Main Info

<b>Model</b>	AMEL 50
<b>Manufacturer</b>	Chantiers AMEL S.A. (FRA)
<b>Designer</b>	AMEL Design Group
<b>Category</b>	Bluewater cruiser
<b>Year</b>	2019
<b>Location</b>	Südfrankreich
<b>Flag</b>	fr
<b>VAT status</b>	EU-VAT paid
<b>Material</b>	GRP
<b>Rig</b>	Sloop with furling mast
<b>Cabins</b>	3
<b>Berths</b>	6

## Dimensions & Material

<b>LOA</b>	16.50 m
<b>LWL</b>	14.50 m
<b>Beam</b>	4.79 m
<b>Draft</b>	2.15 m
<b>Displacement</b>	23 t
<b>Sail area</b>	126 m <sup>2</sup>
<b>Engine</b>	VOLVO PENTA D3-110
<b>Power</b>	110 PS/81 KW
<b>Drive</b>	Shaft with folding propeller
<b>Fresh water</b>	600 L
<b>Fuel</b>	650 L
<b>Holding tank</b>	160 L

## Key Facts

- Electric davits and dinghy.
- Retractable bow thruster.
- Electric furling mast.
- Light oak interior.
- Air conditioning and diesel heating.
- Diesel generator ONAN 8 KW.
- Watermaker 100 l/h.
- Fixed doghouse.

## Description

Luxurious and seaworthy bluewater cruiser from France fully equipped for circumnavigation. Her proven concept, the high standard of boatbuilding in the shipyard and the focus on safety, reliability and comfort make AMEL sailing yachts legendary vessels for long distance cruising and you meet them in the most remote areas of the world. Very rigid, torsion-free construction using vinylester resins with laminated bulkheads.

Deep, well-protected cockpit with fixed doghouse above the helm station. Bright and modern interior with plenty of light and air below decks through numerous large hull ports and coachhouse windows, eight deck hatches and seven portholes. The AMEL 50 was elected "European Yacht of the Year 2018" in the category luxury cruiser. This AMEL 50 is a very well equipped owner's yacht for worldwide cruising. Extensive specification incl. diesel generator 8 KW, watermaker, air conditioning and diesel heating, washing machine, electric winches, electric davits incl. 3,10m dinghy, VARIFOLD folding propeller etc. Thanks to the electric genoa furling system, self-tacking jib and electric furling main incl. electric outhaul, this AMEL 50 is suitable for single handed sailing. Modern, exclusive interior in light, satin-varnished oak with white-covered panels, light laminated floorboards and numerous leather applications. The AMEL 50 moored is ready to sail in the south of France and can be viewed at any time upon appointment. The cover picture is a brochure photo of a ...

## Rig/Sails

- Deck-stepped, top-rigged AMEL furling mast
- Two sets of aft-swept spreaders
- Electric mainsail furling system and electric outhaul
- Rig painted white
- Electric genoa furling system PROFURL
- Fixed cutter stay with electric furling system PROFURL
- Gennaker/spinnaker gear
- Dyneema/Vectran halyards
- LED deck lights on mast
- LED lights in lower spreaders down and up
- LED cockpit light in boom
- LED 3-color lantern and anchor light in top
- Two halyard winches HARKEN 40.2ST on mast
- Dinghy crane integrated in main boom
- Furling mainsail INCIDENCES Hydranet triradial approx. 62m<sup>2</sup> with UV-protection
- Furling genoa INCIDENCES Hydranet triradial approx. 64 m<sup>2</sup> with UV-protection
- Self-tacking jib INCIDENCES Hydranet triradial approx. 24 m<sup>2</sup> with UV-protection
- Furling gennaker INCIDENCES approx. 180 m<sup>2</sup>

## Deck

- Stainless steel bowsprit for gennaker/code-0 with integrated anchor roller
- Electric anchor windlass LEWMAR V5 2.000 W with remote control and chain counter in cockpit
- Mooring gear: DELTA-anchor 40 kg and 100 m galvanized anchor chain 10 mm
- Full length stainless steel tube guardrail with railing gates to port and starboard
- Integrated teak seats in pushpit
- Four stainless steel mooring cleats
- Four stainless steel spring cleats amidships
- Electric genoa winches HARKEN 60.2STE
- Secondary winches HARKEN 46.2ST
- Electric mainsheet winch HARKEN 46.2STE
- Large sail locker below foredeck with storage for fenders, mooring lines and sails
- Large lazarette below aft deck
- Deep, well protected cockpit with helm station and helm seat to port
- Doghouse with windscreen (central opening window), two hatches in roof, overhead lighting and retractable GRP bimini aft
- Aft and side canvas for bimini
- Electro-hydraulic folding swim platform with wireless remote control
- Swim ladder
- Stern shower hot/cold
- Folding cockpit table in teak and stainless steel

## Interior/Layout

- AMEL 50 with exclusive, well finished interior in light-coloured, satin varnished oak with white-covered panels, laminated floorboards and numerous leather applications
- Generous saloon with U-shaped dinette to port
- Folding saloon table at dinette with two additional seats
- L-shaped sofa to starboard
- Forward facing chart table with navigator seat to port aft
- Longitudinal galley in passage to aft cabin to starboard
  - Worktop in white CORIAN
  - Double sink
  - Microwave with grill 230 V
  - Refrigerator 125 l with 2 drawers
  - Freezer below saloon sofa
  - Dishwasher
  - Electric stove FORCE 10 (3 burners and oven)
- Luxurious, spacious owner's cabin aft with wide island double berth, settee and dressing table, ample storage in lockers, compartments, shelves and below berth that folds up assisted by gas springs
- En suite owner's heads compartment with separate shower and electric toilet to port
- Guest cabin forward with island double berth
- Second heads compartment with separate shower and electric toilet to port
- Lateral cabin to starboard with double bunk beds
- Leecloths below berths
- OCEANAIR blinds and mosquito nets
- Blinds for hull and coachhouse windows
- LED interior lighting with dimmer (ceiling spotlights, indirect lighting and reading lamps)

## Technical Equipment

- VOLVO PENTA D3-110 5 cylinder inboard diesel 110 hp/81 KW
- Engine hours (as of May 2024): 1.466 h
- EVC-system with electronic throttle
- Hydraulic gearbox
- Shaft drive system with flexible coupling, 4-blade folding propeller VARIFOLD and line cutter on propeller shaft
- Large, easily accessible and well soundinsulated engine compartment below cockpit floor
- Retractable bow thruster SIDEPOWER 24 V/8 hp
- Sound insulated 3 cylinder diesel generator ONAN 8 KW (operating hours as of May 2024: 880 h)
- 230 V shore power connection with charging cable
- Batterycharger MASTERVOLT 24 V/60 A
- Additional battery charger MASTERVOLT 24 V/100 A
- Gel service battery bank 24 V/600 Ah
- Starter battery 12 V for engine and generator
- 230 V and 12 V/USB sockets in interior
- Air conditioning for saloon and all cabins
- Separate diesel heating
- Washing machine with dryer
- Watermaker DESSALATOR dual voltage 24 V/230 V/100 l/h
- Two electric toilets each with holding tank 80 l with deck connection and sea discharge
- Hot water boiler 50 l
- LED navigation lights
- LED interior lighting

## Navigation/Electronics

- BROOKS [&] GATEHOUSE Hydra 5000 System
- 2 x B[&]G H5000 GFD displays in cockpit and 1 x H5000 GFD display at chart table
- Analogue B[&]G wind display in cockpit
- Autopilot FURUNO Navpilot 711C
- Second autopilot FURUNO Navpilot 711C (fully independent system)
- 15" multifunction display FURUNO Navnet TZT2 at chart table
- GPS-receiver FURUNO GP330
- Radar antenna on first spreader
- AIS Class B-transponder FURUNO FA50
- Compass
- Video camera in mast
- VHF-radio GARMIN 215 at chart table and second station at helm
- TV LCD 40" with electric lift in saloon with separate inverter 24 V/230 V/800 W
- Marine entertainment system FUSION Apollo SRX770 with two speakers in saloon and two cockpit speakers

## Safety

- Watertight collision bulkhead between sail locker and forward cabin
- The AMEL 50 can be divided into five watertight sections
- Life raft VIKING 8 pers. in container at pushpit
- Fire extinguisher
- Fire extinguishing system in engine compartment
- Safety boarding ladder and two steps on the outside of the swim platform
- Electric and manual bilge pumps
- Safety equipment

## Accessories

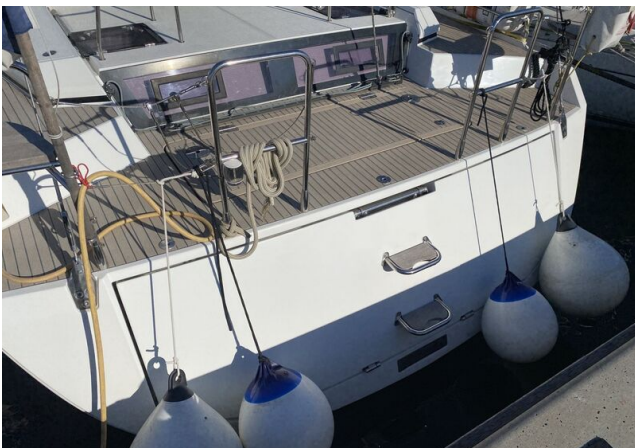
- Dinghy: HIGHFIELD RIB 3.10 m with outboard engine HONDA 4-stroke 10 hp
- Folding carbon fiber gangway 2,60 m
- Cockpit cushions
- Sunbathing cushions for aft deck
- Sun awning for main boom
- Protection covers for console, steering wheel, helm seat, companionway, cockpit table and instruments
- Made to measure bed linen kit
- Fenders
- Mooring lines

### Brokerage Liability Disclaimer

All information especially regarding the VAT-status of a yacht has been supplied by third parties. It is non-binding and without guarantee, subject to error and alteration. Our brokerage relies exclusively on information supplied by the vendor carefully compiled and checked by us to the best of our knowledge. Hence, a liability for correctness and completeness of provided information cannot be assumed.



## IMAGES



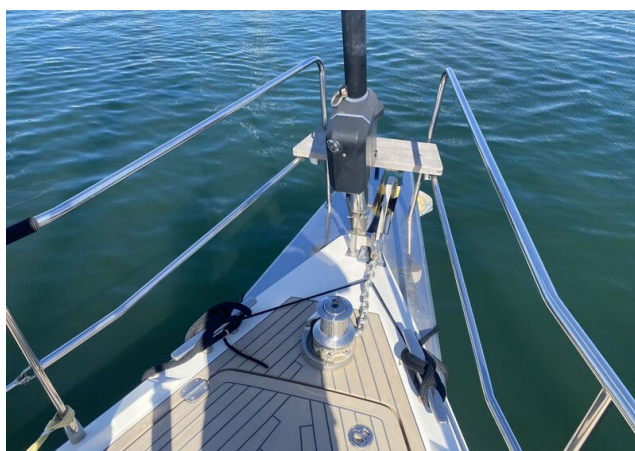


## IMAGES





## IMAGES





## IMAGES



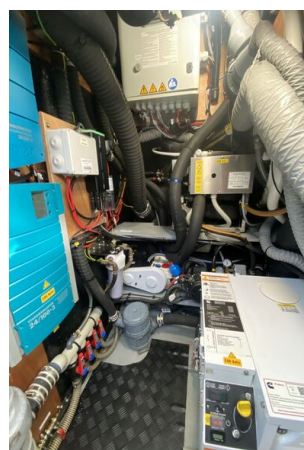
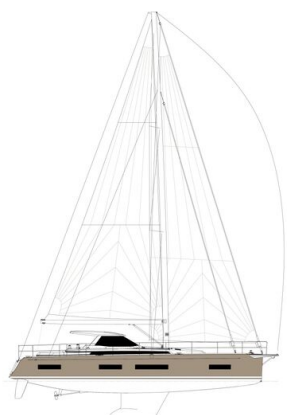
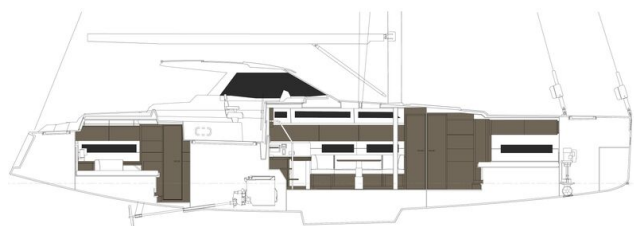
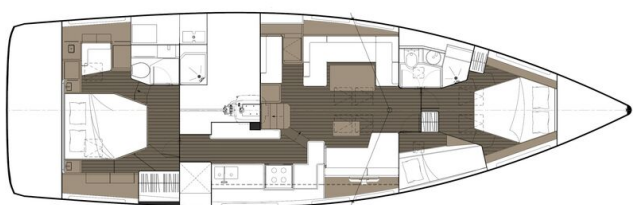


## IMAGES





## IMAGES



## IMAGES

