



# AMEL 50

Year 2023

**AMEL**  
KronenbergYachting

---

Kronenberg Yachting GmbH  
Neubiberger Str. 57a | 81737 München

# AMEL 50



**NEW LISTING**

**1.150.000,00 €**

EU-VAT paid

## Main Info

<b>Model</b>	AMEL 50
<b>Manufacturer</b>	Chantiers AMEL S.A. (FRA)
<b>Designer</b>	Berret-Racoupeau Yachtdesign
<b>Category</b>	Bluewater cruiser
<b>Year</b>	2023
<b>Location</b>	Ligurien/Italien
<b>Flag</b>	at
<b>VAT status</b>	EU-VAT paid
<b>Material</b>	GRP
<b>Rig</b>	Sloop with furling mast
<b>Cabins</b>	3
<b>Berths</b>	6

## Dimensions & Material

<b>LOA</b>	16.50 m
<b>LWL</b>	14.50 m
<b>Beam</b>	4.79 m
<b>Draft</b>	2.15 m
<b>Displacement</b>	23 t
<b>Sail area</b>	126 m <sup>2</sup>
<b>Engine</b>	VOLVO PENTA D3-150
<b>Power</b>	150 PS/110 KW
<b>Drive</b>	Shaft with MAXPROP
<b>Fresh water</b>	600 L
<b>Fuel</b>	650 L
<b>Holding tank</b>	160 L

## Key Facts

- Cutter stay with electric furler.
- Condition peactically as new.
- Interior in American walnut.
- Bow and stern thruster.
- Air conditioning and diesel heating.
- Diesel generator ONAN 8 KW.
- Watermaker 100 l/h.
- Very lightly sailed.

## Description

Luxurious and seaworthy bluewater cruiser built in France fully equipped for circumnavigation. Her proven concept, the high standard of boatbuilding in the shipyard and the focus on safety, reliability and comfort make AMEL sailing yachts legendary vessels for long distance cruising and you meet them in the most remote areas of the world. Very rigid, torsion-free construction using vinylester resins with laminated bulkheads.

Deep, well-protected cockpit with fixed doghouse above the helm station. Bright and modern interior with plenty of light and air below decks through numerous large hull ports and coachhouse windows, eight deck hatches and seven portholes. The AMEL 50 won the title "European Yacht of the Year 2018" in the luxury cruiser category. Young, well-maintained, and lightly used private yacht offered by her first owner.

Extensive specification including retractable bow and stern thrusters, 8 kW diesel generator, watermaker, air conditioning and diesel heating, washer-dryer, electric winches, etc. Thanks to an electric genoa furling system, self-tacking jib with electric furler, and electric furling mainsail including electric outhaul, this AMEL 50 is suitable for single-handed sailing. Complete B&G navigation electronics with chart plotter, radar, autopilot, AIS-transponder, and VHF. Modern, exclusive interior in silk-varnished American walnut with white-covered panels, light laminated floorboards, and numerous leather applications. This AMEL 50 was only put into ...

## Rig/Sails

- Deck-stepped, top-rigged furling mast
- Two sets of swept spreaders
- Electric mainsail furling system and electric outhaul
- Rig painted white
- Electric genoa furling system PROFURL
- Fixed cutter stay with electric furling system PROFURL
- Dyneema/Vectran halyards
- LED deck light on mast
- LED spreader lights
- LED cockpit light in boom
- LED 3-colour light and anchor light in mast top
- Two HARKEN 40.2ST halyard winches on mast
- White painted spinnaker pole (stowed on mast)
- Outboard engine crane integrated in main boom
- HARKEN rail and traveller for self-tacking jib
- HARKEN genoa tracks and line-adjustable sheeting cars
- INCIDENCES Hydranet triradial furling mainsail approx. 62 m<sup>2</sup> with UV-protection
- INCIDENCES Hydranet triradial furling genoa approx. 64 m<sup>2</sup> with UV-protection
- Self-tacking jib for cutter stay INCIDENCES Hydranet triradial approx. 24 m<sup>2</sup> with UV-protection
- Code-0 INCIDENCES approx. 107 m<sup>2</sup> with furler
- Gennaker/spinnaker gear



## Deck

- Stainless steel bowsprit for gennaker/code-0 with integrated anchor roller
- Electric anchor windlass LEWMAR V5 2.000 W with remote control and chain counter in cockpit
- Mooring gear: DELTA-anchor 40 kg and 100 m galvanised anchor chain 10 mm
- Continuous fixed sea railing made of welded stainless steel tube with railing gates to starboard and port
- Integrated teak seats in pushpit
- Four stainless steel mooring cleats
- Four stainless steel spring cleats
- Two additional mooring cleats at stern
- Electric genoa winches HARKEN 60.2STE
- Secondary winches HARKEN 46.2ST
- Electric mainsheet winch HARKEN 46.2STE
- Large sail locker below foredeck with storage space for fenders, mooring lines and sails
- Large locker below aft deck with ample stowage and mount for outboard engine
- Deep, well-protected cockpit with helm station and pilot seat to port
- Fixed doghouse with windscreen, central opening window, two hatches in roof, ceiling lighting and retractable GRP sun roof aft
- Aft and side canvas panels for doghouse (complete cockpit enclosure)
- Electro-hydraulic folding swim platform with remote control
- Swim ladder
- Hot/cold stern shower
- Folding cockpit table in teak and stainless steel

## Interior/Layout

- AMEL 50 with exclusive, well finished interior in satin-varnished American walnut with white-covered panels, laminated floorboards and numerous leather applications
- Spacious saloon with U-shaped seating area to port
- Folding saloon table at dinette with two additional sliding seats
- L-shaped sofa to starboard
- Forward-facing chart table with navigator seat to port aft
- Longitudinal galley in passage to aft cabin to starboard
  - Worktop in white CORIAN
  - Stainless steel double sink
  - Electric stove (3 burners and oven)
  - Microwave with grill 230 V
  - Refrigerator 125 l with 2 drawers
  - Nespresso coffee machine
- Luxurious, spacious owner's cabin in stern with wide island double berth, settee and vanity table, ample storage in cabinets, compartments, shelves, and below berth, which can be lifted by gas struts
- En suite owner's heads compartment with sink, separate shower and electric toilet to port
- Guest cabin forward with island double berth
- Forward heads compartment with sink, separate shower and electric toilet to port
- Lateral cabin to starboard with two bunk beds
- Leecloth below berths
- OCEANAIR blinds and mosquito screens
- Blinds for hull windows and coachhouse windows
- LED interior lighting with dimmer (ceiling spots, indirect ambient lighting and reading lamps)

## Technical Equipment

- VOLVO PENTA D3-150 5 cylinder commonrail turbo diesel 150 hp/110 KW
- Engine hours (as of December 2025): 663 h
- EVC-system with electronic throttle
- Hydraulic gearbox
- Shaft system with flexible coupling and Maxprop Boomerang feathering propeller (new 2026)
- Large, easily accessible and very well sound insulated engine compartment
- Retractable bow thruster SIDEPOWER 24 V/8 hp
- Retractable stern thruster SIDEPOWER 24 V/8,4 hp with separate battery
- Encapsulated 3-cylinder diesel generator ONAN 8 KW (operating hours as per December 2025: 166 h)
- 230 V shore power connection with charging cable
- MASTERVOLT 24 V/60 A battery charger
- Additional battery charger MASTERVOLT 24 V/100 A
- MASTERVOLT 24 V/230 V/2.500 W inverter
- Gel service battery bank 24 V/600 Ah
- Starter battery 12 V for engine and generator
- 230 V and 12 V/USB sockets in interior
- Solar panels 2 x 24 V/400 Wp on doghouse roof
- Air conditioning DOMETIC 48.000 BTU for saloon and all cabins
- Diesel heating WEBASTO Aerotherm 7,6 KW
- Washer/dryer
- Watermaker DESSALATOR dual voltage 24 V/230 V/100 l/h (operating hours February 2025: approx. 119 h)
- Fresh water shore connection
- Two electric toilets, each with 80-litre holding tank with deck suction and sea discharge
- Hot water boiler 50 l
- LED navigation lights

## Navigation/Electronics

- BROOKS & GATEHOUSE Hydra 5000 system
- 2 x B&G H5000 GFD display in cockpit, 1 x H5000 GFD display at chart table and 1 x H5000 GFD display in owner's cabin
- Analogue B&G wind display in cockpit
- FURUNO Navpilot 711C autopilot
- 16" multifunction display FURUNO Navnet TZT3 at helm station
- Radar antenna on first spreader
- AIS Class B-transponder FURUNO FA70
- Compass
- VHF-radio GARMIN 215 at chart table and second unit at helm station
- Marine entertainment system FUSION Apollo SRX770 with BOSE Freespace 3 system, subwoofer, two loudspeakers in saloon and two cockpit loudspeakers
- Barometer

## Safety

- Watertight collision bulkhead between sail locker and forward cabin
- The AMEL 50 can be divided into five watertight sections to prevent water ingress
- VIKING 8 person life raft in container at pushpit
- Recue collar (horseshoe)
- Jackstays on deck
- Lifesling
- Fire extinguisher
- Fire extinguishing system in engine compartment
- Additional retractable safety ladder on transom and two steps on outside of swim platform
- Electric and manual bilge pumps

## Accessories

- Folding carbon fibre gangway
- Cockpit cushions
- Sun lounger cushions for aft deck
- Sun awning for main boom
- Sun protection cover for doghouse windscreen
- Fenders
- Mooring lines

### Brokerage Liability Disclaimer

All information especially regarding the VAT-status of a yacht has been supplied by third parties. It is non-binding and without guarantee, subject to error and alteration. Our brokerage relies exclusively on information supplied by the vendor carefully compiled and checked by us to the best of our knowledge. Hence, a liability for correctness and completeness of provided information cannot be assumed.

## IMAGES





## IMAGES



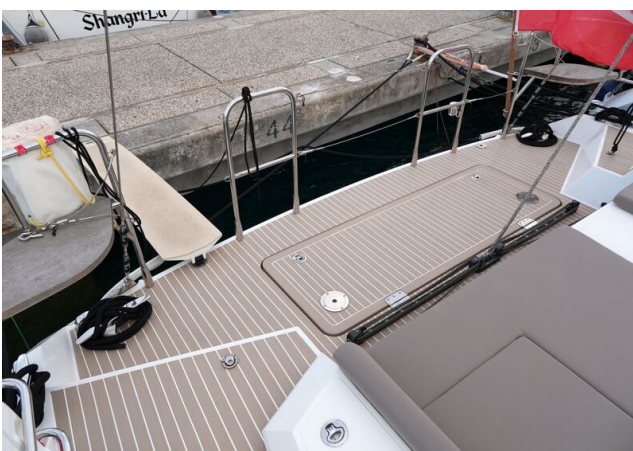


## IMAGES



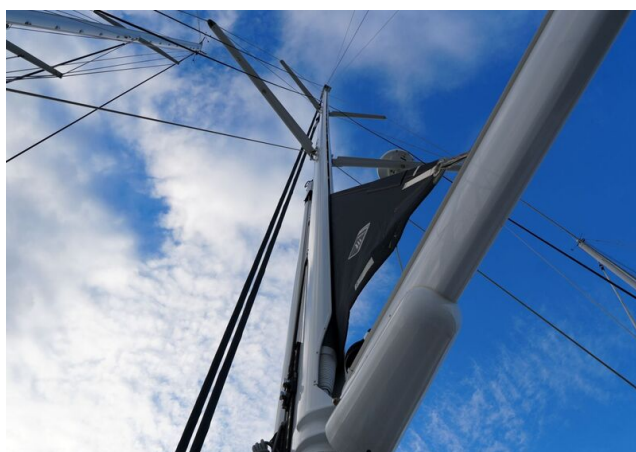


## IMAGES



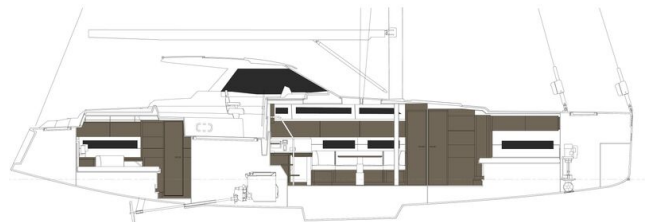
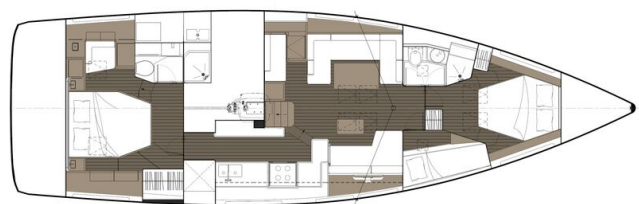


## IMAGES

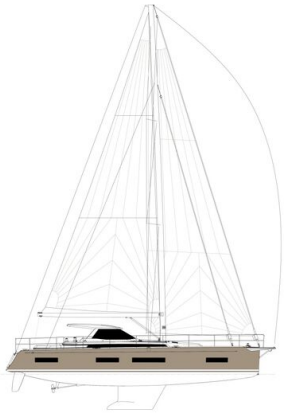




## IMAGES



## IMAGES





## IMAGES



## IMAGES





## IMAGES





## IMAGES



## IMAGES

