



AMEL 50

Year 2020

AMEL
KronenbergYachting

Kronenberg Yachting GmbH
Neubiberger Str. 57a | 81737 München

AMEL 50



Boat sold.

Main Info

Model	AMEL 50
Manufacturer	Chantiers AMEL S.A. (FRA)
Designer	Berret-Racoupeau Yacht design
Category	Bluewater cruiser
Year	2020
Location	Spanische Mittelmeerküste
Flag	pl
VAT status	EU-VAT paid
Material	GRP
Rig	Sloop with furling mast
Cabins	3
Berths	6

Dimensions & Material

LOA	16.50 m
LWL	14.50 m
Beam	4.79 m
Draft	2.15 m
Displacement	23 t
Sail area	126 m ²
Engine	VOLVO PENTA D3-110
Power	110 PS/81 KW
Drive	Shaft with folding propeller
Fresh water	600 L
Fuel	650 L
Holding tank	160 L

Key Facts

- Electric davits and dinghy.
- Retractable bow thruster.
- Electric furling mast.
- Interior in mahogany.
- Air conditioning and diesel heating.
- Diesel generator ONAN 8 KW.
- Watermaker 100 l/h.
- Fixed doghouse.

Description

Luxurious and seaworthy bluewater cruiser built in France fully equipped for circumnavigation. Her proven concept, the high standard of boatbuilding in the shipyard and the focus on safety, reliability and comfort make AMEL sailing yachts legendary vessels for long distance cruising and you meet them in the most remote areas of the world. Very rigid, torsion-free construction using vinylester resins with laminated bulkheads.

Deep, well-protected cockpit with fixed doghouse above the helm station. Bright and modern interior with plenty of light and air below decks through numerous large hull ports and coachhouse windows, eight deck hatches and seven portholes. The AMEL 50 was elected "European Yacht of the Year 2018" in the category luxury cruiser. Owner's yacht excellently equipped for worldwide cruising. Extensive specification incl. 8 KW diesel generator, watermaker, air conditioning and diesel heating, washing machine, electric winches, electric davits including dinghy, etc. Thanks to the electric genoa furling system, self-tacking jib with electric furler, and electric furling mainsail with electric outhaul, this AMEL 50 is suitable for single-handed sailing. Complete navigation electronics with plotter, radar, two independent autopilots, AIS, and satellite phone. Modern, exclusive interior in satin-varnished mahogany with white upholstered panels, bright laminated floorboards, and numerous leather applications.

The AMEL 50 is in excellent condition, ready to sail on the ...

Rig/Sails

- Deck-stepped, top-rigged AMEL furling mast
- Two sets of aft-swept spreaders
- Electric mainsail furling system and electric outhaul
- Rig painted white
- Electric genoa furling system PROFURL
- Fixed cutter stay with electric furling system PROFURL
- Preventer boom (stored at mast)
- Gennaker/spinnaker gear
- Dyneema/Vectran halyards
- LED deck light on mast
- LED cockpit light in boom
- LED 3-colour light and anchor light in mast top
- Two HARKEN 40.2ST halyard winches on mast
- Dinghy crane integrated in main boom
- HARKEN rail and traveller for self-tacking jib
- HARKEN genoa tracks and line-adjustable sheeting cars
- INCIDENCES Hydranet triradial furling mainsail approx. 62 m² with UV-protection
- INCIDENCES Hydranet triradial furling genoa approx. 64 m² with UV-protection
- Self-tacking jib for cutter stay INCIDENCES Hydranet triradial approx. 24 m² with UV-protection
- Furling gennaker INCIDENCES approx. 180 m² with furling system
- Storm sail approx. 10 m²

Deck

- Stainless steel bowsprit for gennaker/code-0 with integrated anchor roller
- Electric anchor windlass LEWMAR V5 2.000 W with remote control and chain counter in cockpit
- Mooring gear: DELTA-anchor 40 kg and 100 m galvanised anchor chain 10 mm
- Electric AMEL davits
- Continuous fixed sea railing made of welded stainless steel tube with railing gates to starboard and port
- Integrated teak seats in pushpit
- Four stainless steel mooring cleats
- Four stainless steel spring cleats
- Electric genoa winches HARKEN 60.2STE
- Secondary winches HARKEN 46.2ST
- Electric mainsheet winch HARKEN 46.2STE
- Large sail locker below foredeck with storage space for fenders, mooring lines and sails
- Large locker below aft deck
- Deep, well-protected cockpit with helm station and pilot seat to port
- Fixed doghouse with windscreen, central opening window, two hatches in roof, ceiling lighting and retractable GRP bimini aft
- Aft and side panels for bimini (cockpit tent)
- Electro-hydraulic folding swim platform with radio remote control
- Swim ladder
- Hot/cold stern shower
- Folding cockpit table in teak and stainless steel

Interior/Layout

- AMEL 50 with exclusive, well finished interior in satin-varnished mahogany with white-covered panels, laminated floorboards and numerous leather applications
- Spacious saloon with U-shaped seating area to port
- Folding, electrically adjustable saloon table at dinette with two additional sliding seats
- Saloon table convertible to an additional berth
- L-shaped sofa to starboard
- Forward-facing chart table with navigator seat to port aft
- Longitudinal galley in passage to aft cabin to starboard
 - Worktop in white CORIAN
 - Double sink
 - Gas stove (3 burners and oven)
 - Microwave with grill 230 V
 - Dishwasher 230 V
 - Refrigerator 125 l with 2 drawers
 - Nespresso coffee machine
 - Freezer below saloon sofa
- Luxurious, spacious owner's cabin in stern with wide island double berth, and vanity table, ample storage in cabinets, compartments, shelves, an additional bookshelf, and below berth, which can be lifted with gas struts
- Owner's heads with separate shower and electric toilet to port
- Guest cabin in foredeck with island double berth
- Heads compartment with separate shower and electric toilet to port
- Lateral cabin to starboard with two bunk beds
- Leecloth below berths
- OCEANAIR blinds and mosquito screens
- Blinds for hull windows and coachhouse windows
- LED interior lighting with dimmer (ceiling spots, indirect ambient lighting and reading lamps)
- Nine electric fans in the interior

Technical Equipment

- VOLVO PENTA D3-110 5 cylinder inboard diesel 110 hp/81 KW
- Engine hours (as of February 2025): 838 h
- EVC system with electronic throttle
- Hydraulic gearbox
- Shaft system with flexible coupling and 3-bladed VARIVOLD folding propeller
- Line cutter on propeller shaft
- Large, easily accessible and very well sound insulated engine compartment
- Retractable bow thruster SIDEPOWER 24 V/8 hp
- Encapsulated 3-cylinder diesel generator ONAN 8 KW (operating hours February 2025: 166 h)
- 230 V shore power connection with shore connection cable
- MASTERVOLT 24 V/60 A battery charger
- Additional battery charger MASTERVOLT 24 V/100 A
- MASTERVOLT 24 V/230 V/2.500 W inverter
- Gel service battery bank 24 V/600 Ahb (new 2023)
- Starter battery 12 V for engine and generator (new 2023)
- 230 V and 12 V/USB sockets in interior
- Solar panels 2 x 24 V/400 Wp on davits
- Hydrogenerator Watt [&] Sea 12 V/24 V/600 W
- Air conditioning DOMETIC 48.000 BTU for saloon and all cabins
- Diesel heating WEBASTO Aerotherm 7,6 KW
- Washing machine and dryer
- Watermaker DESSALATOR dual voltage 24 V/230 V/100 l/h (operating hours February 2025: approx. 64 h)
- Fresh water shore connection
- Two electric toilets, each with 80-litre holding tank with deck suction and sea discharge (toilet in owner's heads can be switched to seawater flushing)
- Hot water boiler 50 litres
- LED navigation lights
- LED interior lighting
- Safe

Navigation/Electronics

- BROOKS [&] GATEHOUSE Hydra 5000 system
- 3 x B[&]G H5000 GFD display in cockpit and 1 x H5000 GFD display at chart table
- Analogue B[&]G wind display in cockpit
- FURUNO Navpilot 711C autopilot
- Second FURUNO Navpilot 711C autopilot (fully independent)
- 15' multifunction display FURUNO Navnet TZT2 at helm station
- GPS-receiver FURUNO GP33
- Radar antenna on first spreader
- AIS Class B-transponder FURUNO FA70
- Additional 7 multifunction display B[&]G Vulcan 7 at helm station with B[&]G Forward Scan forward-looking sonar
- Compass
- Video camera in mast
- VHF-radio GARMIN 215 at chart table and second unit at helm station
- Satellite phone SAILOR Inmarsat Fleet One
- TV LCD screen 40' with electric lift in saloon and separate inverter 24 V/230 V/800 W
- Marine entertainment system FUSION Apollo SRX770 with BOSE FreeSpace 3-System, two loudspeakers and subwoofer in saloon and two cockpit loudspeakers
- Router World Pepwave WIFI 3G/4G with receiver and amplifier
- Clock and barometer

Safety

- Watertight collision bulkhead between sail locker and forward cabin
- The AMEL 50 can be divided into five watertight sections to prevent water ingress
- VIKING 8 person life raft in container at pushpit
- JONBUOY rescue module at pushpit
- Rescue collar at pushpit
- Lifebuoys and marker buoy on the stern basket
- Jackstays on deck
- EPIRB
- Searchlight with remote control mounted on spreader
- Fire extinguisher
- Fire extinguishing system in engine compartment
- Additional retractable safety ladder on transom and two steps on outside of swim platform
- Electric and manual bilge pumps
- Safety equipment

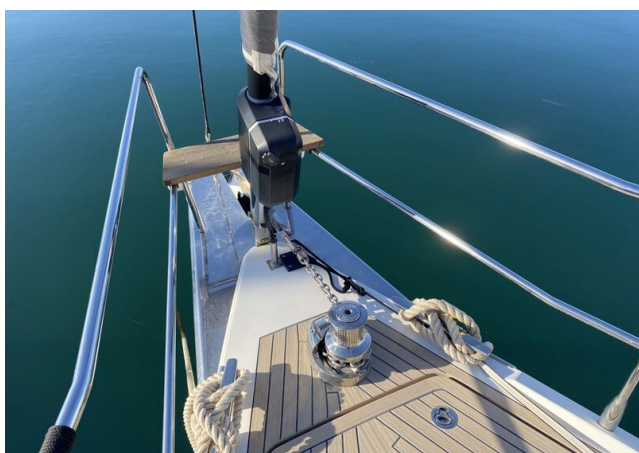
Accessories

- Dinghy: RIB HIGHFIELD 290 UL with outboard engine HONDA 6 hp
- Carbon fibre gangway
- Cockpit cushions
- Sun lounge cushions for aft deck
- Sun lounge cushions for foredeck
- Sun awning for main boom
- Canvas covers for console, steering wheel, helm seat, companionway, cockpit table and instruments
- Spare parts kit
- Eight inflatable fenders
- Mooring lines

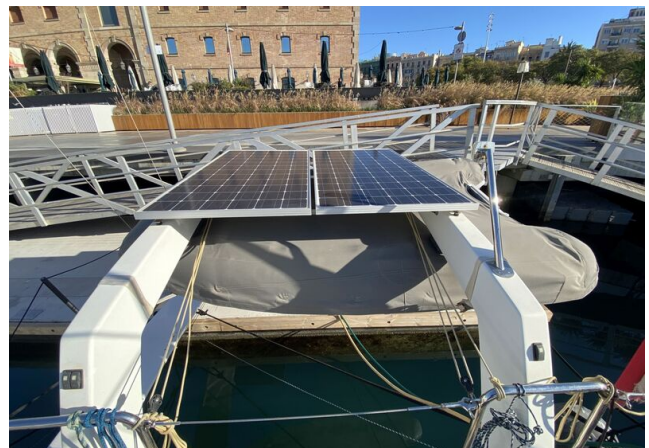
Brokerage Liability Disclaimer

All information especially regarding the VAT-status of a yacht has been supplied by third parties. It is non-binding and without guarantee, subject to error and alteration. Our brokerage relies exclusively on information supplied by the vendor carefully compiled and checked by us to the best of our knowledge. Hence, a liability for correctness and completeness of provided information cannot be assumed.

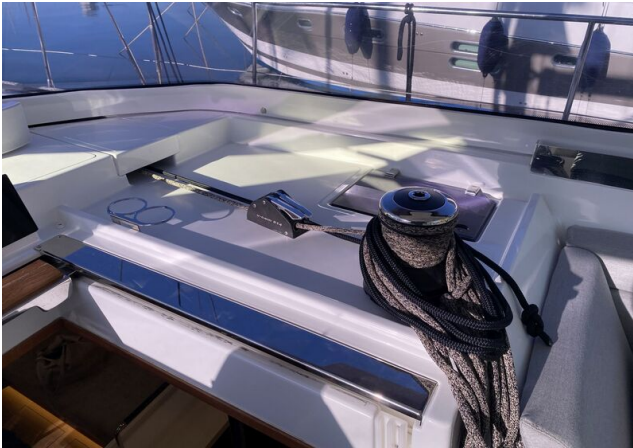
IMAGES



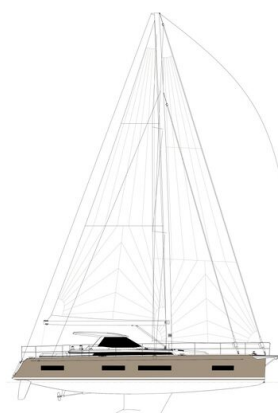
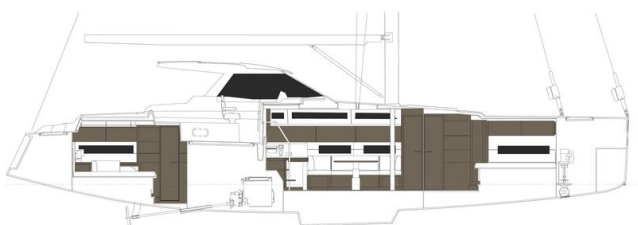
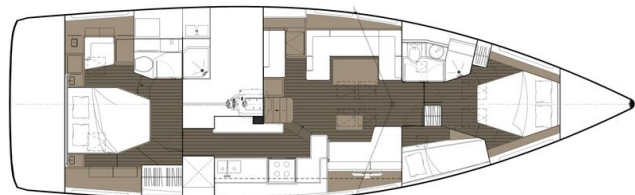
IMAGES



IMAGES



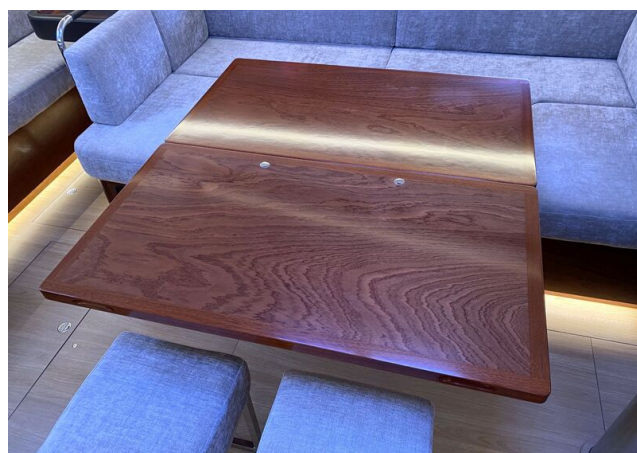
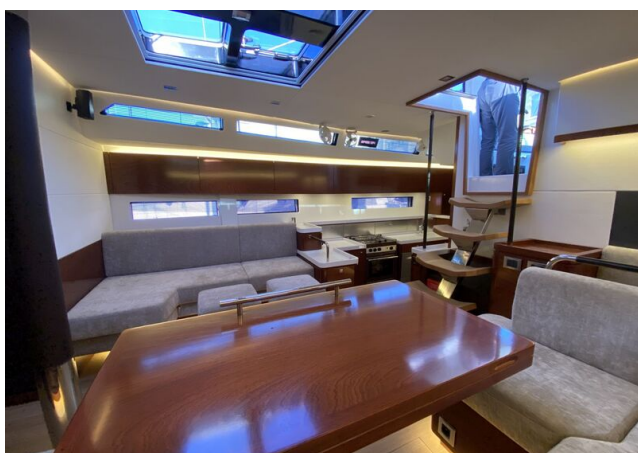
IMAGES



IMAGES



IMAGES



IMAGES



IMAGES



IMAGES

