



AMEL 50

Year 2019

AMEL
KronenbergYachting

Kronenberg Yachting GmbH
Neubiberger Str. 57a | 81737 München

AMEL 50



Boat sold.

Main Info

Model	AMEL 50
Manufacturer	Chantiers AMEL S.A. (FRA)
Designer	AMEL Design Group
Category	Bluewater cruiser
Year	2019
Location	Mallorca/Spanien
Flag	de
VAT status	EU-VAT paid
Material	GRP
Rig	Sloop with cutter stay
Cabins	3
Berths	6

Dimensions & Material

LOA	16.50 m
LWL	14.50 m
Beam	4.79 m
Draft	2.15 m
Displacement	19 t
Sail area	126 m ²
Engine	VOLVO PENTA D3-110
Power	110 PS/81 KW
Drive	Shaft with VARIPROP
Fresh water	600 L
Fuel	675 L
Holding tank	160 L

Key Facts

- Retractable bow thruster.
- First handover in 2019.
- Electric furling mast.
- Air conditioning.
- New set of NORTH-Sais in 2022.
- Diesel generator ONAN 8 KW.
- Electric head sail furlers.
- Fixed doghouse.

Description

Luxurious and seaworthy bluewater cruiser from France fully equipped for circumnavigation. Her proven concept, the high standard of boatbuilding in the shipyard and the focus on safety, reliability and comfort make AMEL sailing yachts legendary vessels for long distance cruising and you meet them in the most remote areas of the world. Very rigid, torsion-free construction using vinylester resins with laminated bulkheads.

Deep, well-protected cockpit with fixed doghouse above the helm station. Bright and modern interior with plenty of light and air below decks through numerous large hull ports and coachhouse windows, eight deck hatches and seven portholes. The AMEL 50 was elected "European Yacht of the Year 2018" in the category luxury cruiser. This AMEL 50 has only been handed over by the yard to the current owner in season 2019 and is in mint condition. Continuous care and professional technical maintenance. Extensive specification for long distance cruising incl. retractable bow thruster, electric furling systems for all sails, electric winches, air conditioning, diesel generator 8 KW, lithium service batteries, watermaker, Oscar anti collision system etc. Light finish in oak and white covered panels. A NORTH-Sails 3Di sail set was delivered in March 2022. The cover photo is a brochure picture.

Rig/Sails

- Deck stepped, top-rigged AMEL furling mast
- Two sets of aft swept spreaders
- Electric mainsail furling system and electric outhaul
- Rig painted white
- Electric genoa furler PROFURL NDE2
- Fixed cutter stay with electric furler PROFURL NDE2
- Gennaker/spinnaker deck gear
- Dyneema/Vectran halyards
- LED deck light on mast
- LED spreader lights
- LED cockpit light in boom
- LED 3 color lantern and anchor light in mast top
- Two halyard winches HARKEN 40.2ST on mast
- Furling mainsail NORTH-Sails 3Di approx. 62 m² (new March 2022)
- Furling genoa NORTH-Sails 3Di ca. 64 m² (new March 2022) with UV-protection
- Furling self-tacking jib on cutter stay NORTH-Sails 3Di approx 24 m² (new 2022) with UV-protection
- Second set of original INCIDENCES DFi sails available
- Code-0 INCIDENCES CZ0-D4 Premium Membrane Aramid/Carbon incl. anti torsions cable and UV-protection
- Electric furler for Code-0
- Furling gennaker NORTH-Sails (new 2021) incl. furling system

Deck

- Stainless steel bowsprit for gennaker/code-0 with integrated anchor roller
- Electric anchor windlass with remote control in cockpit
- Mooring gear: Stainless steel ULTRA-anchor 35 kg and 100 m stainless steel anchor chain 10 mm
- Continuous fixed guard rail in stainless steel tube with gates to starboard and port
- Integrated teak seats in pushpit
- Four stainless steel mooring cleats
- Four stainless steel spring cleats
- Electric genoa winches HARKEN 60.2STE
- Secondary winches HARKEN 46.2ST
- Electric halyard winch HARKEN 46.2STE
- Large sail locker below foredeck with storage for fenders, mooring lines and sails
- Large locker below aft deck with dedicated bracket for TORQEEDO outboard engine and electric air compressor
- Deep, well protected cockpit with helm station and steering seat to port
- Doghouse with windscreen (opening central window), two hatches in the roof and cockpit lights in ceiling
- Sun protection for doghouse windscreen
- Fixed, retractable bimini
- Electro-hydraulic folding swim platform with wireless remote control
- Swim ladder
- Stern shower hot/cold
- Removable stainless steel davits
- Folding cockpit table in teak and stainless steel

Layout/Interior

- Spacious saloon with U-shaped dinette to port
- Folding saloon table with electric leg and two additional seats/poofs
- Saloon table can be converted to an additional double berth
- L-shaped sofa to starboard
- Forward facing chart table to port aft
- Longitudinal galley in passage to aft cabin to starboard
 - White CORIAN worktop
 - Double sink
 - GROHE soda streamer
 - Microwave/grill 230 V
 - Refrigerator 125 l with 2 drawers
 - Freezer
 - Espresso machine
 - Electric stove FORCE 10 (3 burners and oven)
- Luxurious, spacious owner's cabin aft over the entire beam of the yacht with island double berth, settee and vanity table, safe, ample storage space in lockers, compartments, shelves and below the berth, that can be lifted up by gas springs.
- En-suite owner's heads with separate shower and electric toilet to port
- Guest cabin forward with double island berth
- Quest heads compartment with separate shower and electric toilet to port
- Lateral cabin to starboard with bunk beds
- Exclusive and well finished interior in satin varnished oak with white padded panels, laminated floorboards and numerous leather applications
- Leecloth below berths
- OCEANAIR blinds and mosquito screens
- Blinds for hull ports and coachhouse windows
- LED interior lighting (ceiling spotlights, indirect lighting and reading lights)

Technical Equipment

- VOLVO PENTA D3-110 5 cylinder inboard diesel 110 hp/81 KW
- Engine hours: 600 h in March 2022
- EVC system with electronic throttle
- Hydraulic transmission
- Shaft drive with feathering propeller VARIOFOLD and Spurs line cutter on propeller shaft
- Large, easily accessible engine compartment with excellent sound insulation
- Retractable bow thruster SIDEPOWER 24 V/8 hp
- Encapsulated diesel generator ONAN 8 KW with auto start-function
- 230 V shore power connection with charging cable
- 2 x combined battery charger/inverter MASTERVOLT Mass Combi Pro 24 V/100 A/3.500 W
- 4 x Lithium service battery MASTERVOLT MLI Ultra 24/5000
- Starter battery for main engine
- Starter battery for diesel generator
- 230 V and 12 V/USB sockets
- Air conditioning for saloon and cabins
- Washer/dryer
- Watermaker DESSALATOR dual voltage 24 V/230 V/100 l/h
- Two electric toilets with holding tank 80 l with deck connection and sea discharge
- Hot water boiler 50 l
- Fresh water filter
- LED navigation lights
- LED interior lights
- Safe

Safety

- Liferaft 4W 8 pers.in container on pushpit
- EPIRB
- Fire extinguishers
- Automatic fire extinguisher in engine room
- Electric and manual bilge pumps
- OSCAR collision avoidance system

Accessories

- Folding carbon fiber gangway
- Cockpit cushions
- Sunpad for aft deck
- Sun awning for boom
- Canvas covers for console, cockpit table and instruments
- Complete bed linen
- Fenders
- Mooring lines

Brokerage Liability Disclaimer

All information especially regarding the VAT-status of a yacht has been supplied by third parties. It is non-binding and without guarantee, subject to error and alteration. Our brokerage relies exclusively on information supplied by the vendor carefully compiled and checked by us to the best of our knowledge. Hence, a liability for correctness and completeness of provided information cannot be assumed.

Navigation/Electronics

- BROOKS [&] GATEHOUSE Hydra 5000 system
- 3 x B[&]G H5000 GFD display in cockpit and H5000 GFD display at chart table
- Analogue B[&]G wind display in cockpit
- Autopilot B[&]G
- 2 x multi function-display B[&]G Zeus³ Glass Helm 16" at helm station
- Multi function-display B[&]G Zeus³ 16" at chart table
- Radar antenna B[&]G on first spreader
- AIS-transponder
- Compass
- VOLVO PENTA Easy Connect interface
- Two video cameras in mast
- VHF-radio B[&]G V60B
- Second wireless VHF station B[&]G H60 at helm station
- TV LCD flat screen 40" with electric lift in saloon, TV-antenna and separate inverter 24 V/230 V/800 W
- Apple-TV
- SONOS AMP-system with two Sonos Play:1 speakers in saloon, two Sonos Play:1 speakers in owner's cabin and two BOSE cockpit speakers
- Router World Pepwave WIFI 3G/4G with receiver and amplifier
- Clock, barometer, thermometer

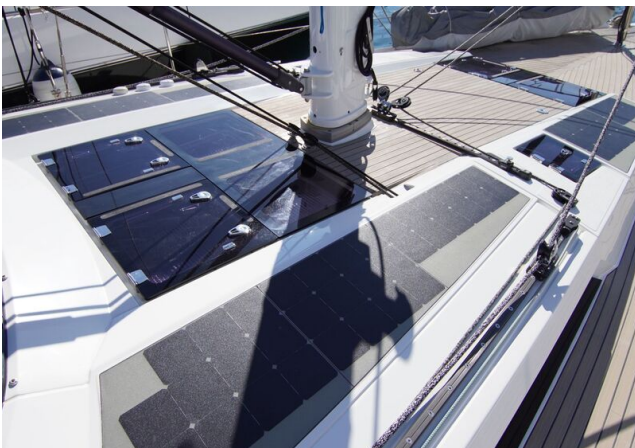
IMAGES



IMAGES



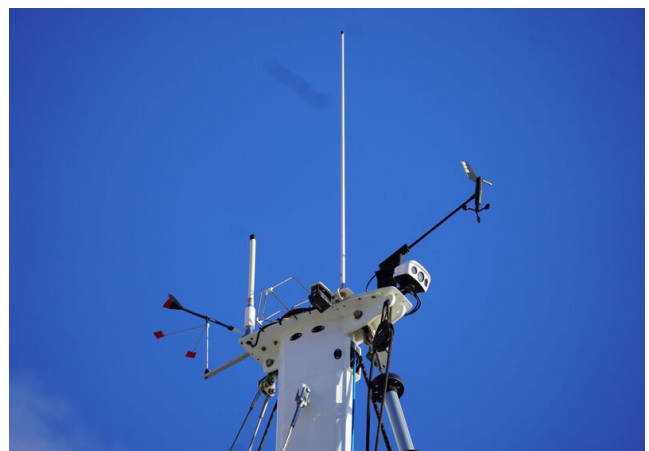
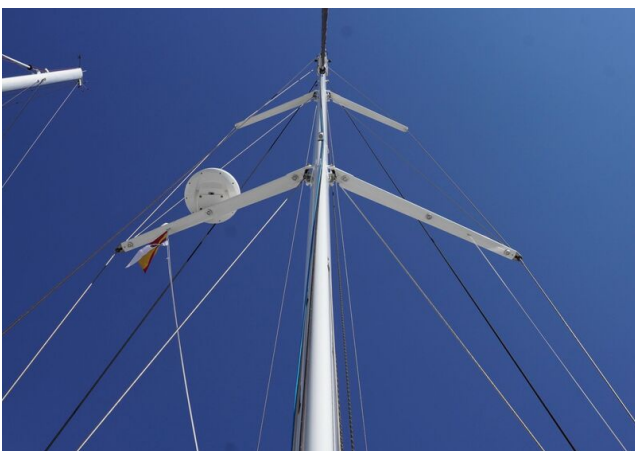
IMAGES



IMAGES



IMAGES



IMAGES



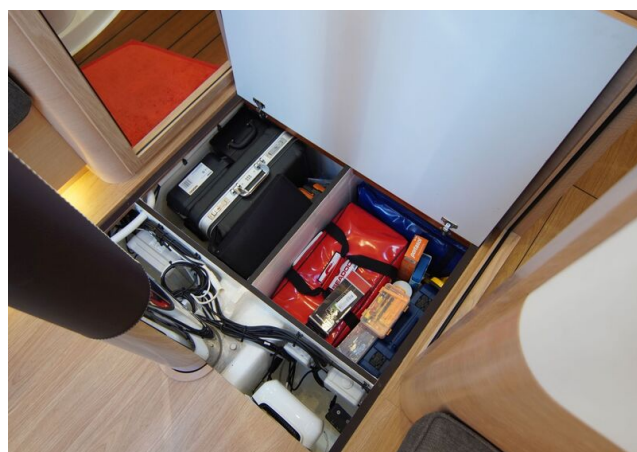
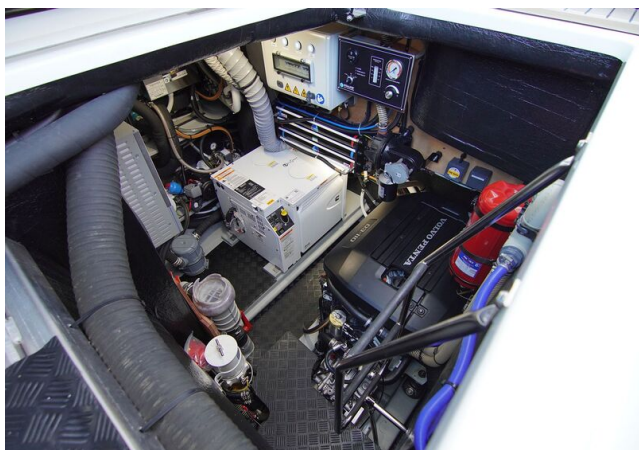
IMAGES



IMAGES



IMAGES



IMAGES

