



AMEL 50

Year 2019

AMEL
KronenbergYachting

Kronenberg Yachting GmbH
Neubiberger Str. 57a | 81737 München

AMEL 50



Boat sold.

Main Info

Model	AMEL 50
Manufacturer	Chantiers AMEL S.A. (FRA)
Designer	AMEL Design Group
Category	Bluewater cruiser
Year	2019
Location	Südfrankreich
Flag	fr
VAT status	EU-VAT paid
Material	GRP
Rig	Sloop with furling mast
Cabins	3
Berths	6

Dimensions & Material

LOA	16.50 m
LWL	14.50 m
Beam	4.79 m
Draft	2.15 m
Displacement	23 t
Sail area	126 m ²
Engine	VOLVO PENTA D3-110
Power	110 PS/81 KW
Drive	Shaft with folding propeller
Fresh water	600 L
Fuel	650 L
Holding tank	160 L

Key Facts

- Light oak interior.
- Electric davits and dinghy.
- Retractable bow thruster.
- Electric furling mast.
- Cutter stay with electric furler.
- Diesel generator ONAN 8 KW.
- Watermaker 100 l/h.
- Air conditioning.

Description

Luxurious and seaworthy bluewater cruiser from France fully equipped for circumnavigation. Her proven concept, the high standard of boatbuilding in the shipyard and the focus on safety, reliability and comfort make AMEL sailing yachts legendary vessels for long distance cruising and you meet them in the most remote areas of the world. Very rigid, torsion-free construction using vinylester resins with laminated bulkheads.

Deep, well-protected cockpit with fixed doghouse above the helm station. Bright and modern interior with plenty of light and air below decks through numerous large hull ports and coachhouse windows, eight deck hatches and seven portholes. The AMEL 50 was elected "European Yacht of the Year 2018" in the category luxury cruiser. Private owner's yacht fully equipped for worldwide cruising. Extensive specification incl. diesel generator 8 KW, watermaker, air conditioning, diesel heating, washer-dryer, electric winches, electric davits incl. dinghy and VARIFOLD folding propeller etc. Thanks to the electric genoa furling system, self-tacking jib and electric furling mainsail incl. electric outhaul, this AMEL 50 can be sailed single-handed. Modern, exclusive interior in satin-varnished light oak with panels covered in white, light-coloured laminated floorboards and numerous leather applications. The AMEL 50 is moored and ready to sail in the South of France. The yacht can be viewed any time upon appointment.

Rig/Sails

- Deck-stepped, top-rigged AMEL furling mast
- Two sets of aft-swept spreaders
- Electric mainsail furling system and electric outhaul
- Rig painted white
- Electric genoa furling system PROFURL
- Fixed cutter stay with electric furling system PROFURL
- Dyneema/Vectran halyards
- LED deck light on mast
- LED spreader lights up and down
- LED cockpit light in boom
- LED 3-colour light and anchor light in mast top
- Two HARKEN 40.2ST halyard winches on mast
- Dinghy crane integrated in main boom
- HARKEN rail and traveller for self-tacking jib
- HARKEN genoa tracks and line-adjustable sheeting cars
- INCIDENCES Hydranet triradial furling mainsail approx. 62 m² with UV-protection
- INCIDENCES Hydranet triradial furling genoa approx. 64 m² with UV-protection
- Self-tacking jib for cutter stay INCIDENCES Hydranet triradial approx. 24 m² with UV-protection

Deck

- Stainless steel bowsprit for gennaker/code-0 with integrated anchor roller
- Electric anchor windlass LEWMAR V5 2.000 W with remote control and chain counter in cockpit
- Mooring gear: Stainless steel DELTA-anchor 40 kg and 100 m stainless steel anchor chain 10 mm
- Electric AMEL davits
- Continuous fixed sea railing made of welded stainless steel tube with railing gates to starboard and port
- Integrated teak seats in pushpit
- Four stainless steel mooring cleats
- Four stainless steel spring cleats
- Electric genoa winches HARKEN 60.2STE
- Secondary winches HARKEN 46.2ST
- Large sail locker below foredeck with storage space for fenders, mooring lines and sails
- Large locker below aft deck
- Deep, well-protected cockpit with helm station and pilot seat to port
- Fixed doghouse with windscreen, central opening window, two hatches in roof, ceiling lighting and retractable GRP bimini aft
- Aft and side panels for bimini (cockpit tent)
- Electro-hydraulic folding swim platform with radio remote control
- Swim ladder
- Hot/cold stern shower
- Folding cockpit table in teak and stainless steel

Interior/Layout

- AMEL 50 with exclusive, well finished interior in satin-varnished light oak with white-covered panels, laminated floorboards and numerous leather applications
- Spacious saloon with U-shaped seating area to port
- Folding, electrically adjustable saloon table at dinette with two additional sliding seats
- Saloon table convertible to an additional berth
- L-shaped sofa to starboard
- Forward-facing chart table with navigator seat to port aft
- Longitudinal galley in passage to aft cabin to starboard
 - Worktop in white CORIAN
 - Double sink
 - Microwave with grill MIELE 230 V
 - coffee maker NESPRESSO
 - Refrigerator with 2 drawers
 - Freezer below saloon sofa
 - Washer-dryer LG
 - Water filter for drinking water
- Luxurious, spacious owner's cabin in stern with wide island double berth, settee and dressing table, plenty of storage space in lockers, compartments, shelves and below berth, which can be folded up by help of gas springs
- Owner's heads with separate shower and electric toilet to port
- Guest cabin in foredeck with island double berth
- Heads compartment with separate shower and electric toilet to port
- Lateral cabin to starboard with double bunk beds
- Leecloth below berths
- OCEANAIR blinds and mosquito screens
- Blinds for hull windows and coachhouse windows
- Dimmable LED interior lighting (ceiling spots, indirect ambient lighting and reading lamps)

Technical Equipment

- VOLVO PENTA D3-110 5 cylinder inboard diesel 110 hp/81 KW
- Engine hours (as of November 2024): 516 h
- EVC system with electronic throttle
- Hydraulic gearbox
- Shaft system with flexible coupling and VARIFOLD folding propeller
- Large, easily accessible and very well sound insulated engine compartment
- Retractable bow thruster SIDEPOWER 24 V/8 hp
- Encapsulated 3-cylinder diesel generator ONAN 8 KW (operating hours November 2024: 232 h)
- 230 V shore power connection with shore connection cable
- MASTERVOLT 24 V/60 A battery charger
- Additional battery charger MASTERVOLT 24 V/100 A
- MASTERVOLT 24 V/230 V/2.500 W inverter
- Gel service battery bank 24 V/600 Ah
- Starter battery 12 V for engine and generator
- 230 V and 12 V/USB sockets in interior
- Air conditioning DOMETIC 48.000 BTU for saloon and all cabins
- WEBASTO diesel heating 11 kW (warm water system)
- Washing machine with dryer
- Watermaker DESSALATOR dual voltage 24 V/230 V/100 l/h (operating hours November 2024: approx. 272 h)
- Fresh water shore connection
- Two electric toilets, each with 80-litre holding tank with deck suction and sea discharge
- Hot water boiler 50 litres
- LED navigation lights
- LED interior lighting

Navigation/Electronics

- BROOKS [&] GATEHOUSE Hydra 5000 system
- 3 x B[&]G H5000 GFD display in cockpit and 1 x H5000 GFD display at chart table
- Analogue B[&]G wind display in cockpit
- FURUNO Navpilot 711C autopilot
- 15' multifunction display FURUNO Navnet TZT2 at helm station
- GPS-receiver FURUNO GP330
- AIS Class B-transponder FURUNO FA50
- Compass
- Video camera in mast
- VHF-radio GARMIN 215 at chart table
- TV LCD screen 40' with electric lift in saloon and separate inverter 24 V/230 V/800 W
- TV LCD screen in aft cabin
- Marine entertainment system FUSION with two loudspeakers in saloon and two cockpit loudspeakers
- VION weather station

Safety

- Watertight collision bulkhead between sail locker and forward cabin
- The AMEL 50 can be divided into five watertight sections to prevent water ingress
- 4WATER 8 person life raft in container at pushpit
- EPIRB
- Sentinel Boat Monitor 40 (mobile monitoring system)
- Fire extinguisher
- Fire extinguishing system in engine compartment
- Safety ladder and two steps on outside of swim platform
- Electric and manual bilge pumps
- Safety equipment

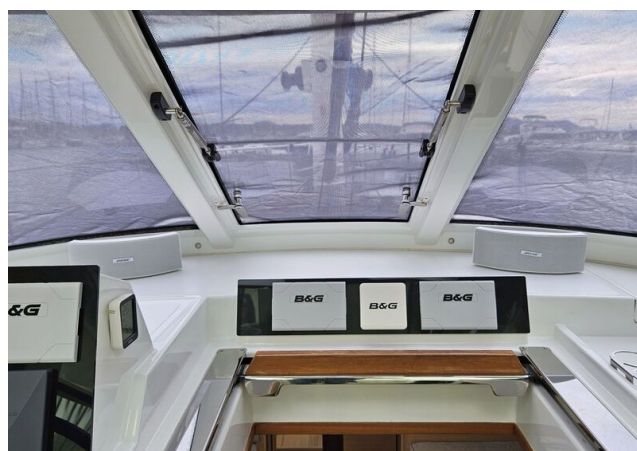
Accessories

- Dinghy: HIGHFIELD RIB with console and steering wheel
- HONDA outboard engine
- Carbon fibre gangway 2,8 m
- Cockpit cushions
- Sunbed cushions for aft deck and foredeck
- Spare parts kit
- Fenders
- Mooring lines

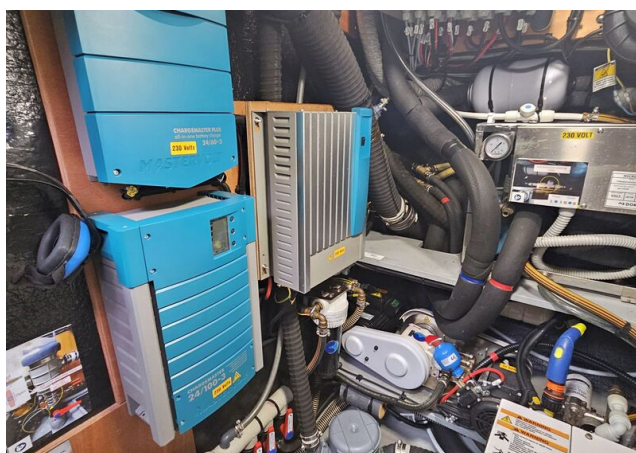
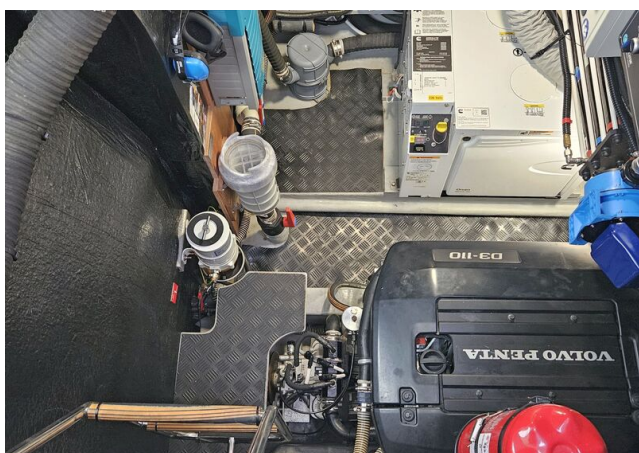
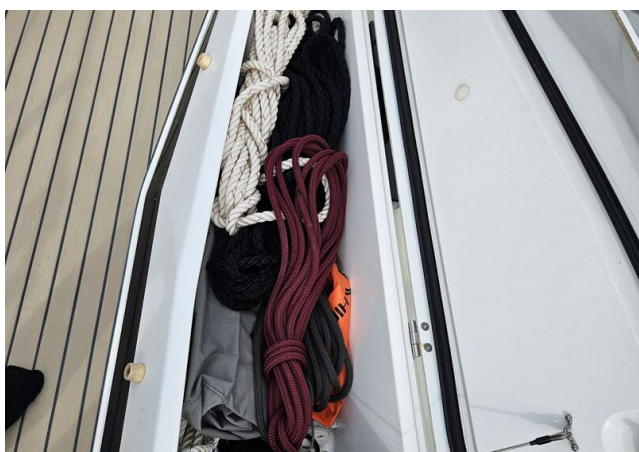
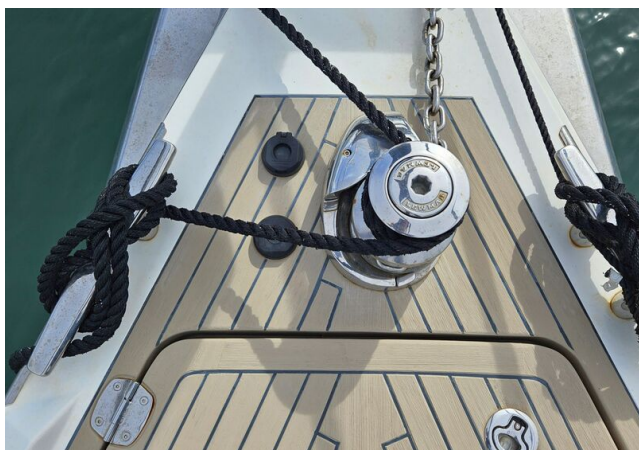
Brokerage Liability Disclaimer

All information especially regarding the VAT-status of a yacht has been supplied by third parties. It is non-binding and without guarantee, subject to error and alteration. Our brokerage relies exclusively on information supplied by the vendor carefully compiled and checked by us to the best of our knowledge. Hence, a liability for correctness and completeness of provided information cannot be assumed.

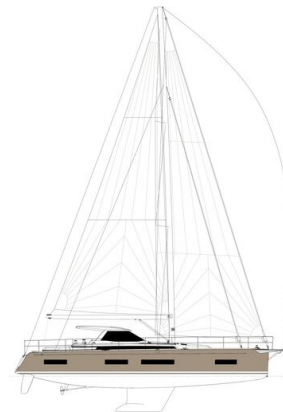
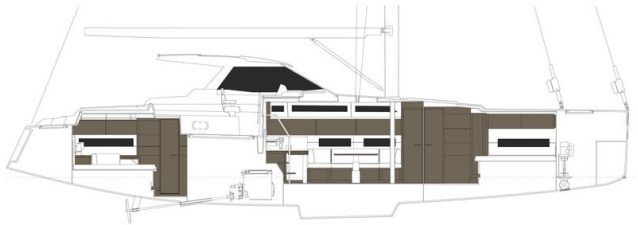
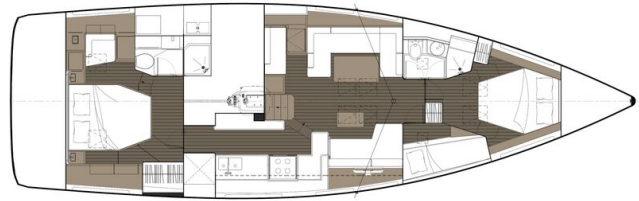
IMAGES



IMAGES



IMAGES



IMAGES



IMAGES



IMAGES

