



AMEL 55

Year 2012

AMEL
KronenbergYachting

Kronenberg Yachting GmbH
Neubiberger Str. 57a | 81737 München

AMEL 55



NEW LISTING

698.000,00 €

excl. VAT

Main Info

Model	AMEL 55
Manufacturer	Chantiers AMEL S.A. (FRA)
Designer	AMEL Design Group
Category	Bluewater cruiser
Year	2012
Location	Adria/Kroatien
Flag	ch
VAT status	excl. VAT
Material	GRP
Rig	Ketch
Cabins	2
Berths	5

Dimensions & Material

LOA	17.30 m
LWL	14.85 m
Beam	4.99 m
Draft	2.20 m
Displacement	24 t
Sail area	151 m ²
Engine	STEYR 144 Turbo Diesel
Power	144 PS/106 KW
Drive	AMEL angle drive
Fresh water	800 L
Fuel	900 L
Holding tank	180 L

Key Facts

- AMEL 55 with forward owner's cabin.
- Airconditioning and diesel heating.
- Diesel generator 11 KW.
- Electric furling masts.
- Mahogany interior with light floor boards.
- Two forestays with electric furlers.
- Watermaker 240 l/h.
- Electric davits.

Description

The AMEL 55 is a luxurious, seaworthy blue water cruiser from France built and equipped for circumnavigation. The proven concept, the high standard of boatbuilding at the shipyard in La Rochelle and the focus on safety, reliability and comfort make AMEL sailing yachts legendary vessels for long distance cruising and you meet them in the most remote areas of the world. Very rigid, torsion-free construction using epoxy resins with laminated bulkheads. Deep, well protected cockpit with high coaming, fixed windscreen and sprayhood. Plenty of light and air inside thanks to numerous coachhouse windows, deck hatches, portholes and hull windows. Fully equipped cruiser with owner's cabin forward and two guest cabins aft. All sheets, and trim equipment can be operated from the cockpit. AMEL 55 with mahogany interior and light floorboards. Extensive specification incl. electric furling masts, bow thruster, hydraulic gangway, electric davits, large diesel generator, air conditioning, diesel heating, watermaker, complete B&G and FURUNO navigation equipment etc. The yacht is fully equipped and ready to sail. She is moored in Liguria close to Genoa and is available for immediate handover.

Rig/Sails

- Ketch rig
- Deck-stepped, 9/10 fractional AMEL main mast with two sets of aft-swept spreaders
- Electric mainsail furling system
- Deck-stepped, top rigged AMEL mizzenmast with one set of aft-swept spraders
- Electric mizzen furling system
- Both masts painted white
- Electric RECKMANN genoa furling system
- Fixed cutter stay with electric RECKMANN furling system
- White painted spinnaker pole (stowed on mast)
- LED 3 colour light and anchor light in top
- Two HARKEN halyard winches on main mast
- HARKEN halyard winch on mizzen mast
- Furling mainsail INCIDENCES Hydranet triradial approx. 47 m²
- Furling mizzen INCIDENCES Hydranet triradial approx. 29 m²
- Furling genoa INCIDENCES Hydranet triradial approx. 75 m² with UV-protection
- Cutter jib INCIDENCES Hydranet triradial approx. 22 m² with UV-protection
- Furling gennaker incl. furling system

Deck

- Solid stainless steel bow fitting designed for double mooring gear
- Electric LEWMAR anchor windlass with remote control and chain counter in cockpit
- Mooring gear: Stainless steel strap anchor 42 kg and 100 m anchor chain 10 mm
- Second electric LEWMAR anchor windlass with DELTA anchor 30 kg, 30 m anchor chain 10 mm and 60 m anchor line
- Electric deck wash pump
- Continuous fixed sea rail made of stainless steel tube with railing gates
- Four stainless steel mooring cleats
- Four stainless steel spring cleats amidships
- Electric genoa winches HARKEN 60.2STE
- Winches for cutter jib HARKEN 46.2ST
- Electric HARKEN winch for mainsheet
- Wide electro-hydraulic folding swim platform with swim ladder
- Large sail locker below foredeck with storage for fenders, mooring lines and sails
- Deck locker below port side deck
- Spacious storage below aft deck
- Deep, well protected cockpit with high coaming and helm station with helmsman's seat and steering wheel to port forward
- Fixed windscreen with GRP frame
- Sprayhood (new 2023)
- Cockpit cover (new 2023)
- Hydraulic gangway OPACMARE
- Fixed, electric SIMPSON stainless steel davits
- Folding teak cockpit table
- Folding teak seats in pushpit
- Grill on pushpit

Layout/Interior

- Exclusive, very well finished interior in mahogany with light laminated floorboards (oak style)
- Spacious, light saloon with U-shaped dinette to port around the electric adjustable saloon table
- Longitudinal sofa to starboard
- Large U-shaped galley to port
 - CORIAN worktop
 - Double sink
 - Induction stove (2 burners and oven)
 - Electric extractor hood
 - Microwave 230 V
 - Fridge approx. 150 l
 - Freezer approx. 150 l
 - Additional freezer compartment
 - Dishwasher
- Large chart table with navigator's seat, instrument console and switch panel to starboard aft
- Generous forward owner's cabin with island bed, dressing table, seat, ample storage in lockers, compartments and shelves
- Owner's heads compartment to port with electric toilet, vanity and separate shower
- VIP guest cabin to starboard aft with double berth, desk, lockers and shelves
- Port guest cabin aft with two single berths, lockers and shelves
- Second heads compartment with electric toilet, vanity and separate shower cabin
- Sea berth in passage to aft cabins to starboard
- Slatted frames under berths
- OCEANAIR blinds and mosquito screens
- LED interior lighting
- Blue LED night lights in interior
- Dimmer for saloon lighting

Technical Equipment

- VOLVO PENTA D3-110 5 cylinder inboard diesel 110 hp/81 KW with electronic throttle
- Engine hours (as of October 2023): 1.341 h
- Double diesel filter with 3-way valve
- Hydraulic gearbox with shaft brake
- AMEL angular drive
- Adjustable propeller with line cutter
- Large, easily accessible and very well soundinsulated engine compartment
- Retractable bow thruster 11 hp
- Diesel generator ONAN 11 KW, operating hours (as of October 2023): 902 h
- 230 V shore power connection with charging cable
- Battery charger 24 V/100 A
- Second battery charger 24 V/60 A
- Inverter 24 V/230 V/2.500 W
- 24 V service battery bank with a capacity of 600 Ah
- Starter batteries 12 V for engine and generator
- Energy balance meter
- 12 V/24 V/230 V sockets in interior
- Air conditioning CLIMMA for the whole yacht
- Diesel heating Aerotherm 5.500 W
- Washer/dryer LG
- Watermaker DESSALATOR 230 V/240 l/h
- Two electric toilets each with holding tank approx. 60 l
- Hot water boiler 50 l
- LED navigation lights
- LED underwater lights at stern
- Fans in saloon and in all cabins
- Solar panels on davits

Navigation/Electronics

- BROOKS [&] GATEHOUSE H3000 system
- B[&]G GFD display in cockpit and GFD display at chart table
- B[&]G 360° analogue wind display
- 2 x autopilot FURUNO Navpilot 711
- Compass
- Chart plotter FURUNO Navnet TZ14 in cockpit
- Chart plotter FURUNO Navnet TZ14 at chart table
- Radar antenna FURUNO FR1835
- GPS-receiver FURUNO GP33 and GP330
- AIS-transponder FURUNO FA50 with HUB 101
- VHF-radio FURUNO at chart table with second control unit in cockpit
- Navtex FURUNO Fax 30
- Docking station for Iridium Extreme with external antenna (without telephone)
- Two video cameras in the rig
- TV LCD flat screen 32" with electric lift in saloon to starboard, DVD player, TV antenna and own inverter 24 V/230 V/800 W
- Radio/CD/MP3-player with BOSE sound system in saloon and cockpit speakers
- Electronic barograph

Safety

- Life raft ZODIAC 8 pers. in container in quick drop bracket at sea rail
- JONBUOY
- Active radar reflector ECHOMAX
- EPIRB
- Safety equipment
- Fire extinguisher
- Electric and manual bilge pump
- Jack stays on deck

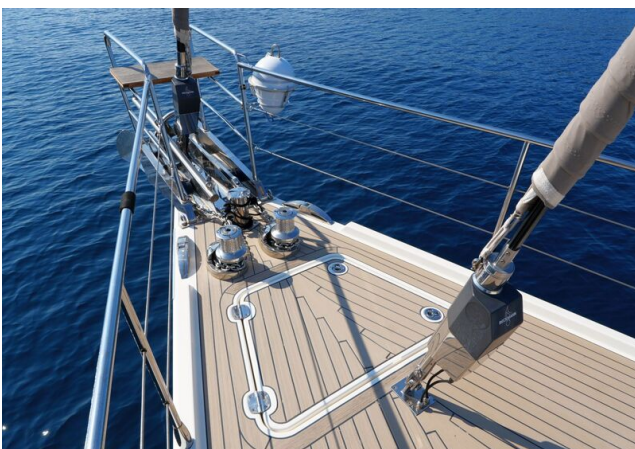
Accessories

- Dinghy (Caribe RIB with steering console and outboard engine HONDA 15 hp)
- Cockpit cushions
- Sun awning for main boom and mizzen boom
- Sunbathing mattresses for aft deck
- Canvas covers for helm station, helm seat, cockpit table, companionway, etc.
- Scuba diving equipment with two 12 l aluminium tanks
- Various spare parts
- Fenders
- Mooring ropes

Brokerage Liability Disclaimer

All information especially regarding the VAT-status of a yacht has been supplied by third parties. It is non-binding and without guarantee, subject to error and alteration. Our brokerage relies exclusively on information supplied by the vendor carefully compiled and checked by us to the best of our knowledge. Hence, a liability for correctness and completeness of provided information cannot be assumed.

IMAGES



IMAGES



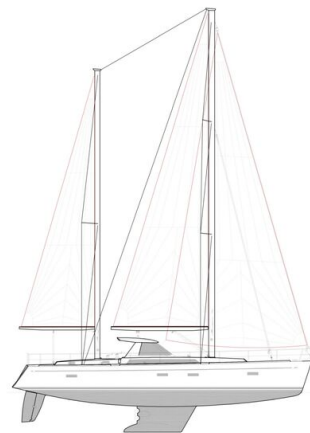
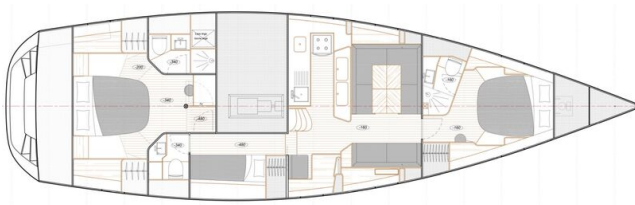
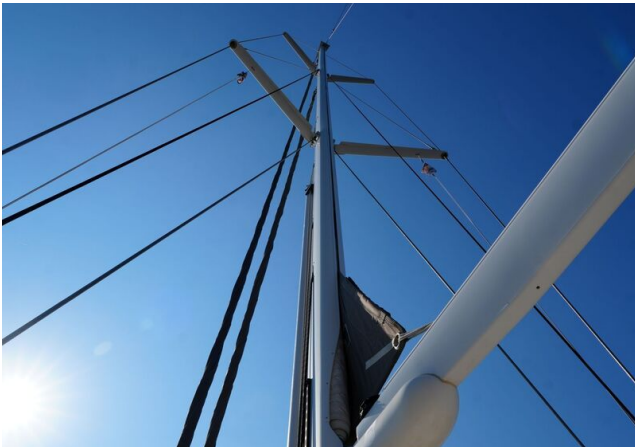
IMAGES



IMAGES



IMAGES



IMAGES



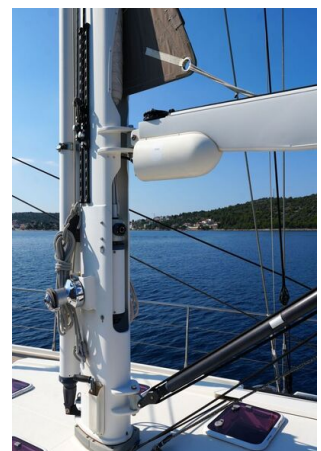
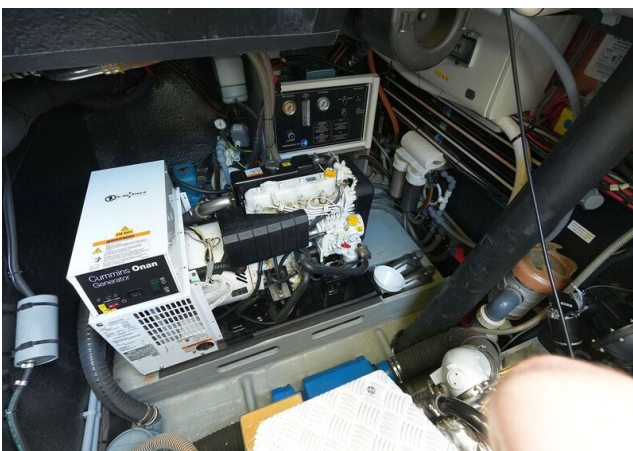
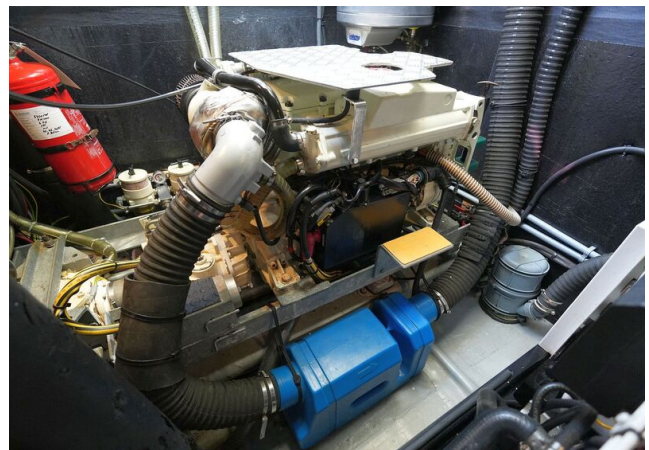
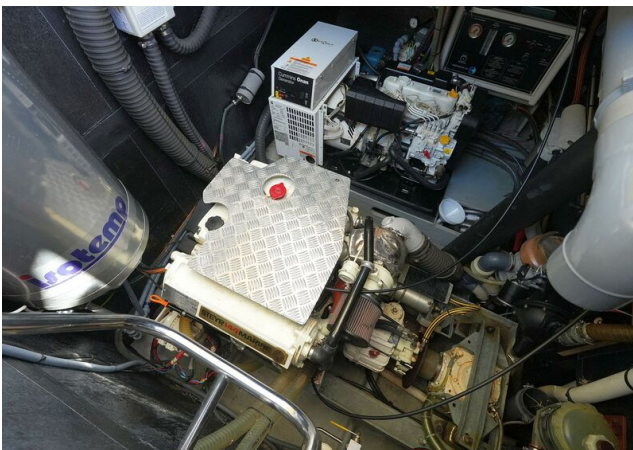
IMAGES



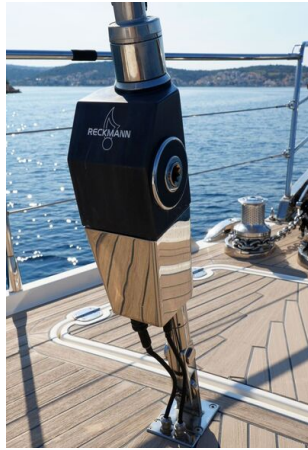
IMAGES



IMAGES



IMAGES



IMAGES

